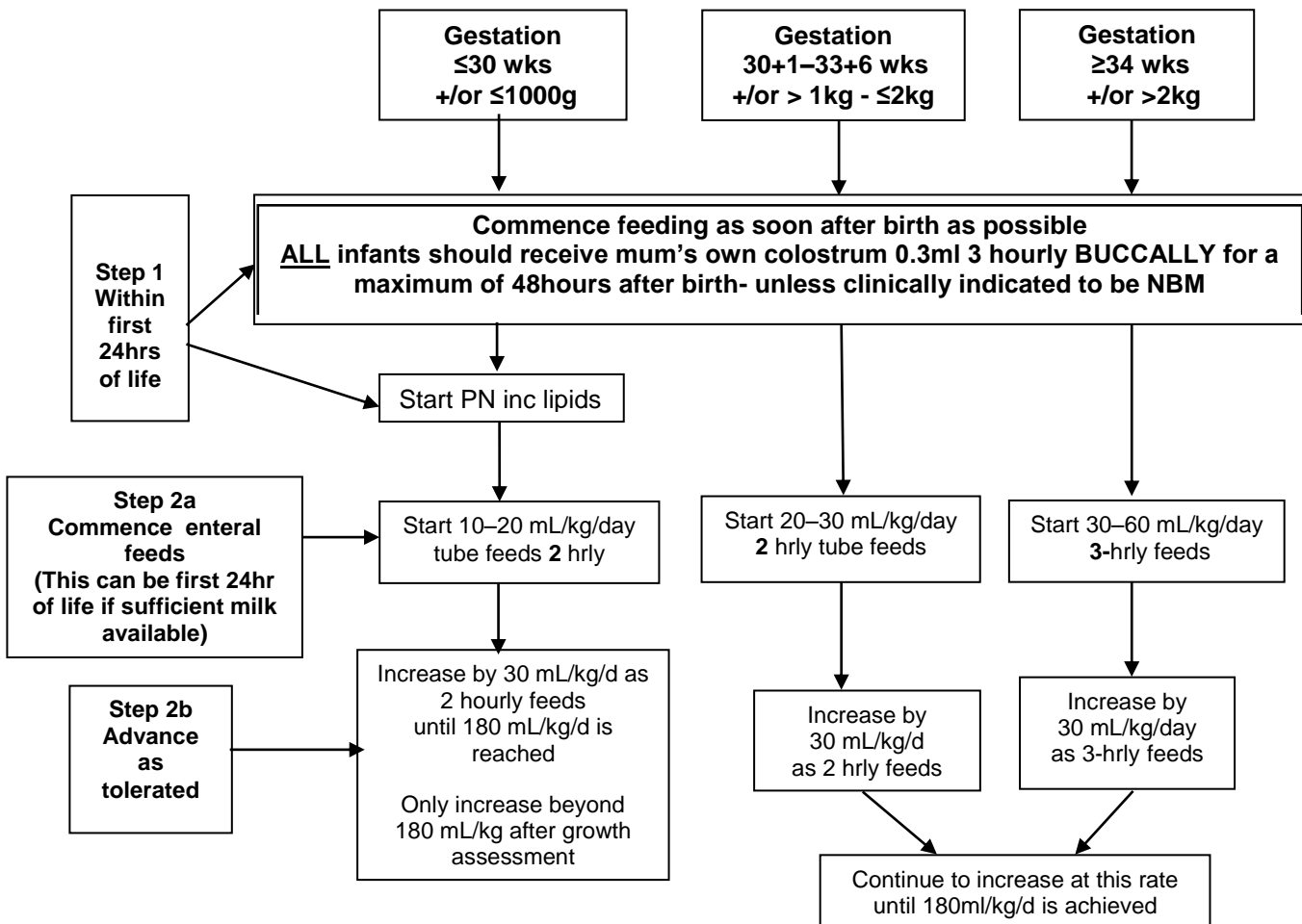




Initiating and Advancing Enteral Feeds

February 2017

Make every effort to use mother's fresh expressed colostrum and breast milk



NB: If no MEBM available by 48hours after delivery start DEBM or preterm formula at trophic level whilst waiting for MEBM or advance as per protocol if insufficient MEBM available.

Record absence of MEBM as NMMA – No Mother's Milk Available